

GB SERIES GRADER BLADES

GB4-HR & GB5

GB4-72HR

GB5-84

GB4-84HR

GB5-96

GB4-96HR

GB5-108



TO THE DEALER:

Assembly and proper installation of this product is the responsibility of the Monroe Tufline dealer. Read manual instructions and safety rules. Make sure all items on the Dealer's Pre-Delivery and Delivery Check Lists in the Owner's/Operator's Manual are completed before releasing equipment to the owner. The dealer must complete the Warranty Registration located on the Monroe Tufline website.

TO THE OWNER:

Read this manual before operating your Monroe Tufline equipment. The information presented will prepare you to do a better and safer job. Keep this manual handy for ready reference. Require all operators to read this manual carefully and become acquainted with all the adjustment and operating procedures before attempting to operate. Replacement manuals can be obtained from your Monroe Tufline dealer.

The equipment you have purchased has been carefully engineered and manufactured to provide dependable and satisfactory use. Like all mechanical products, it will require cleaning and upkeep. Lubricate the unit as specified. Observe all safety information in this manual and safety decals on the equipment.

For service, your authorized Monroe Tufline dealer has trained mechanics, genuine Monroe Tufline service parts, and the necessary tools and equipment to handle all your needs.

Use only genuine Monroe Tufline service parts. Substitute parts will void the warranty and may not meet standards required for safe and satisfactory operation. Record the model number and serial number of your equipment in the spaces provided:

Model: _____ Date of Purchase: _____

Serial Number: (see Safety Decal section for location) _____

Dealer Name: _____ Dealer Contact Information: _____

Provide this information to your dealer to obtain correct repair parts.

Throughout this manual, the term IMPORTANT is used to indicate that failure to observe can cause damage to equipment. The terms CAUTION, WARNING and DANGER are used in conjunction with the Safety-Alert Symbol, (a triangle with an exclamation mark), to indicate the degree of hazard for items of personal safety.



This Safety-Alert Symbol indicates a hazard and means ATTENTION! BECOME ALERT! YOUR SAFETY IS INVOLVED!

DANGER

Indicates an imminently hazardous situation that, if not avoided, will result in death or serious injury.



WARNING

Indicates a potentially hazardous situation that, if not avoided, could result in death or serious injury, and includes hazards that are exposed when guards are removed.



CAUTION

Indicates a potentially hazardous situation that, if not avoided, may result in minor or moderate injury.

IMPORTANT

Indicates that failure to observe can cause damage to equipment.

NOTE

Indicates helpful information.

TABLE OF CONTENTS

| | |
|--|----|
| INTRODUCTION | ii |
| SPECIFICATIONS / GENERAL INFORMATION | 1 |
| SAFETY DECALS | 3 |
| SAFETY RULES | 4 |
| DEALER INSTRUCTIONS | 7 |
| OPERATION | 8 |
| OWNER SERVICE | 10 |
| PARTS CATALOG | 11 |
| BOLT SIZE AND BOLT TORQUE CHART | 13 |
| WARANTY | 14 |
| WARANTY REGISTRATION | 16 |



SPECIFICATIONS

| | GB4-72HR | GB4-84HR | GB4-96HR |
|------------------------------|--|--|--|
| 3-Point Hitch | Limited Category 1 (Quick Hitch Compatible) | Limited Category 1 (Quick Hitch Compatible) | Limited Category 1 (Quick Hitch Compatible) |
| Working Width | 72" | 84" | 96" |
| Overall Width | 72" | 84" | 96" |
| Overall Height | | | |
| Overall Length | | | |
| Tractor HP Range | 35-75 HP | 35-75 HP | 35-75 HP |
| Approximate Operating Weight | 715 lbs | 765 lbs | 840 lbs |
| MoldBoard Type | Plate 1/4" Formed | Plate 1/4" Formed | Plate 1/4" Formed |
| Cutting Edges | 3/8" x 6" Reversible | 3/8" x 6" Reversible | (2 3/8" x 6" Reversible) |

GENERAL INFORMATION

The purpose of this manual is to assist you in operating and maintaining your Land Plane. Read it carefully. It furnishes information and instructions that will help you achieve years of dependable performance.

These instructions have been compiled from field experience and engineering data. Some information may be general in nature, due to unknown and varying operating conditions. However, through experience and these instructions, you should be able to develop procedures suitable to your particular situation.

The illustrations and data used in this manual were current at the time of printing. However, due to possible inline production changes, your machine may vary slightly in detail. We reserve the right to redesign and change the machines as may be necessary without notification.

Throughout this manual, references are made to right and left direction. These are determined by standing behind the tractor facing the direction of forward travel.

SPECIFICATIONS

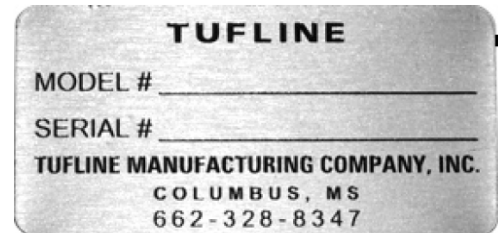
| | GB5-84 | GB5-96 | GB5-108 |
|------------------------------|--|--|--|
| 3-Point Hitch | Limited Category 1 (Quick Hitch Compatible) | Limited Category 1 (Quick Hitch Compatible) | Limited Category 1 (Quick Hitch Compatible) |
| Working Width | 84" | 96" | 96" |
| Overall Width | 84" | 96" | 108" |
| Overall Height | | | |
| Overall Length | | | |
| Tractor HP Range | 55-85 HP | 55-85 HP | 55-85 HP |
| Approximate Operating Weight | 1144 lbs | 1198 lbs | 1242 lbs |
| MoldBoard Type | Plate 3/8" Formed | Plate 3/8" Formed | Plate 3/8" Formed |
| Cutting Edges | 3/8" x 6" Reversible | 3/8" x 6" Reversible | 3/8" x 6" Reversible |

SAFETY & INSTRUCTIONAL DECALS

ATTENTION! BECOME ALERT! YOUR SAFETY IS INVOLVED!
FAILURE TO FOLLOW THESE INSTRUCTIONS COULD RESULT IN SERIOUS INJURY OR
DEATH

Replace Decals Immediately If Damaged!

Check that all safety decals are installed
and in good condition. Replace if decals
are worn or damaged.



REF. #5
SERIAL NUMBER



REF. #1
16318B



REF. #2
15194A



REF. #3
15194 D



REF. #4
15194C

3 Safety Decals



SAFETY RULES



ATTENTION! BECOME ALERT! YOUR SAFETY IS INVOLVED!

Safety is a primary concern in the design and manufacture of our products. Unfortunately, our efforts to provide safe equipment can be wiped out by an operator's single careless act.

In addition to the design and configuration of equipment, hazard control and accident prevention are dependent upon the awareness, concern, judgment, and proper training of personnel involved in the operation, transport, maintenance and storage of equipment.

It has been said "The best safety device is an informed, careful operator." We ask you to be that kind of operator.

TRAINING

- Safety instructions are important! Read all attachment and power unit manuals; follow all safety rules and safety decal information. (Replacement manuals are available from selling dealer.) Failure to follow instructions or safety rules can result in serious injury or death.
- If you do not understand any part of this manual and need assistance, see your dealer.
- Operators must be instructed in and be capable of the safe operation of the equipment, its attachments, and all controls. Do not allow anyone to operate this equipment without proper instructions.
- Never allow children or untrained persons to operate equipment.
- Train all new personnel and review instruction's frequently with existing workers. A person who has not read and understood all operating and safety instructions is not qualified to operate the machine. An untrained operator exposes himself and bystanders to possible serious injury or death.

PREPARATION

- Always wear relatively tight and belted clothing to avoid getting caught in moving parts.

Wear sturdy, rough-soled work shoes and protective equipment for eyes, hair, hands, hearing, and head; and respirator or filter mask where appropriate.

- Make sure attachment is properly secured, adjusted, and in good operating condition.
- Power unit must be equipped with ROPS or ROPS cab and seat belt. Keep seat belt securely fastened. Falling off power unit can result in death from being run over or crushed. Keep foldable ROPS system in "locked up" position at all times.
- A minimum 20% of tractor and equipment weight must be on the tractor front wheels when attachments are in transport position. Without this weight, tractor could tip over, causing personal injury or death. The weight may be attained with a loader, ballast in tires or front tractor weights. Weigh the tractor and equipment. Do not estimate. Implement Code given in Specifications Section, page #1, is used to determine appropriate ballast. See your tractor operator's manual for required number of weights to use for your specified Implement Code.

TRANSPORTATION

- Always comply with all state and local laws governing highway safety and lighting and marking requirements.
- Never allow riders on power unit or attachment.
- Do not operate or transport on steep slopes.
- Use extreme care and reduce ground speed on slopes and rough terrain.
- Do not operate or transport equipment while under the influence of alcohol or drugs. Consult your doctor about operating this machine while taking prescription medications.



SAFETY RULES



ATTENTION! BECOME ALERT! YOUR SAFETY IS INVOLVED!

OPERATION

- Never go underneath equipment (lowered to the ground or raised) unless it is properly blocked and secured. Never place any part of the body underneath equipment or between moveable parts even when the engine has been turned off. Hydraulic system leak down, hydraulic system failures, mechanical failures, or movement of control levers can cause equipment to drop or rotate unexpectedly and cause severe injury or death.
- Always comply with all state and local laws governing highway safety and lighting and marking requirements.
- Operate only in daylight or good artificial light.
- Keep bystanders away from equipment.
- Keep hands, feet, hair, and clothing away from equipment while engine is running. Stay clear of all moving parts.
- Power unit must be equipped with ROPS or ROPS cab and seat belt. Keep seat belt securely fastened. Falling off power unit can result in death from being run over or crushed. Keep foldable ROPS system in “locked up” position at all times.
- Never allow riders on power unit or attachment.
- Always sit in power unit seat when operating controls or starting engine. Securely fasten seat belt, place transmission in neutral, engage brake, and ensure all other controls are disengaged before starting power unit engine.
- Look down and to the rear and make sure area is clear before operating in reverse.
- Use extreme care when working close to fences, ditches, other obstructions, or on hillsides.
- Do not operate or transport on steep slopes.

- Do not stop, start, or change directions suddenly on slopes.
- Always operate down slopes; never across the face.
- Use extreme care and reduce ground speed on slopes and rough terrain.
- Keep alert and watch the front as well as the rear when operating.
- When making pitch and roll angle adjustments, be careful to keep hands and feet clear of sliding parts and possible pinch points.
- Stop power unit and equipment immediately upon striking an obstruction. Turn off engine, remove key, inspect, and repair any damage before resuming operation.
- Before leaving operator's seat, lower lift arms and put attachment on the ground. Engage brake, stop engine, remove key, and remove seat belt.

MAINTENANCE

- Always wear relatively tight and belted clothing to avoid getting caught in moving parts. Wear sturdy, rough-soled work shoes and protective equipment for eyes, hair, hands, hearing, and head; and respirator or filter mask where appropriate.
- Never go underneath equipment (lowered to the ground or raised) unless it is properly blocked and secured. Never place any part of the body underneath equipment or between moveable parts even when the engine has been turned off. Hydraulic system leak down, hydraulic system failures, mechanical failures, or movement of control levers can cause equipment to drop or rotate unexpectedly and cause severe injury or death.



SAFETY RULES



ATTENTION! BECOME ALERT! YOUR SAFETY IS INVOLVED!

MAINTENANCE(cont'd)

- When performing maintenance or repairs make sure the equipment is in the lowered position and properly blocked and secured to prevent rolling. Failure to do so can cause serious injury or death.
- Make sure attachment is properly secured, adjusted, and in good operating condition.
- Before leaving operator's seat, lower lift arms and put attachment on the ground. Engage brake, stop engine, remove key, and remove seat belt.
- Never perform service or maintenance with engine running.
- Keep all persons away from operator control

area while performing adjustments, service, or maintenance.

- Tighten all bolts, nuts, and screws to torque chart specifications, page 13. Check that the land plane is properly attached to the power unit and that the equipment is in a safe condition before putting unit into service.

STORAGE

- Block equipment securely for storage.
- Keep children and bystanders away from storage area.

DEALER INSTRUCTIONS

Instruct customer that service work does not require going underneath unit and never to do s

Dealer Checklist

(Dealer's Responsibility)

Inspect the equipment thoroughly after assembly to be certain it is set up properly before delivering it to the customer. The following check list is a reminder of points to inspect.

Check off each item if it is found satisfactory or after proper adjustment is made.

_____ Check that all safety decals are installed and in good condition. Replace if damaged.

_____ Check all bolts to be sure they are tight.

_____ Check that all cotter pins and safety pins are properly installed.

_____ It is important for the dealer to visually check and make sure all parts are intact prior to delivery to customer.

_____ Show customer the safe, proper procedures to be used when mounting, dismounting, and storing equipment.

_____ For mounted units, add ballast in front tires, and/or front tractor weight to enhance front end stability. A minimum 20% of tractor and equipment gross weight must be on front tractor wheels. When adding weight to attain 20% of tractor and equipment weight on front tractor wheels, you must not exceed the ROPS weight certification. Weigh the tractor and equipment. Do not estimate!

_____ Show customer how to make adjustments.

_____ Present Owner's/Operator's Manual and request that customer and all operators read it before operating equipment. Point out the manual safety rules, explain their meanings and emphasize the increased safety hazards that exist when safety rules are not followed.

_____ Point out the safety decals. Explain their meaning and the need to keep them in place and in good condition. Emphasize the increased safety hazards when instructions are not followed.

_____ Explain to customer the potential crushing hazards of going underneath raised equipment.

OPERATION

Safety is a primary concern in the design and manufacture of our products. Unfortunately, our efforts to provide safe equipment can be wiped out by an operator's single careless act.

In addition to the design and configuration of equipment, hazard control and accident prevention are dependent upon the awareness, concern, judgement, and proper training of personnel involved in the operation, transport, maintenance and storage of equipment.

It has been said "The best safety device is an informed, careful operator." We ask you to be that kind of operator.

The operator is responsible for the safe operation of this equipment. The operator must be properly trained. Operators should be familiar with the equipment, the tractor, and all safety practices before starting operation. Read the safety rules and safety decals on pages 2-5.

WARNING

- Power unit must be equipped with ROPS or ROPS cab and seat belt. Keep seat belt securely fastened. Falling off power unit can result in death from being run over or crushed. Keep foldable ROPS systems in "locked up" position at all times.
- Never allow children or untrained persons to operate equipment.
- Keep bystanders away from equipment.
- **NEVER GO UNDERNEATH EQUIPMENT.** Never place any part of the body underneath equipment or between moveable parts even when the engine has been turned off. Hydraulic system leak down, hydraulic system failures, mechanical failures, or movement of control

levers can cause equipment to drop or rotate unexpectedly and cause severe injury or death.

- Service work does not require going underneath.
- Read Manual for service instructions or have service performed by a qualified dealer.
- Stop tractor and implement immediately upon striking an obstruction. Turn off engine, remove key, inspect, and repair any damage before resuming operation.
- Always wear relatively tight and belted clothing to avoid entanglement in moving parts. Wear sturdy, rough-soled work shoes and protective equipment for eyes, hair, hands, hearing, and head.

Owner/Operator Pre-Operation Checklist (Owner's/Operator's Responsibility)

_____ Review and follow all safety rules and safety decal instructions on page 2 through page 6.

_____ Check that equipment is properly and securely attached to tractor.

_____ Check that all safety decals are installed and in good condition. Replace if damaged.

_____ Check that all hardware is properly installed and secured.

_____ Do not allow riders.

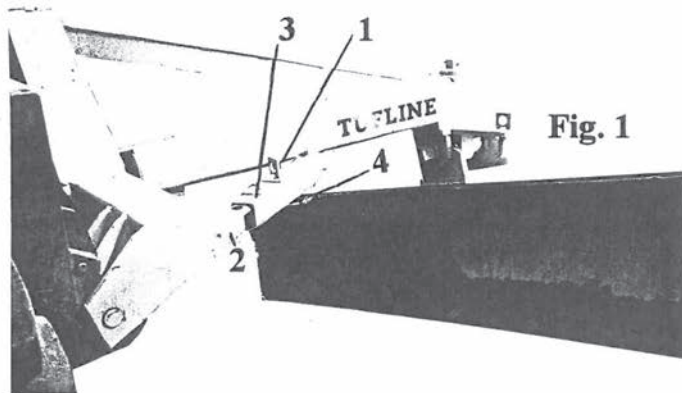
_____ Make sure tractor ROPS or ROPS CAB and seat belt are in good condition. Keep seat belt securely fastened during operation.

_____ After day of operation, check all hardware. Retighten if needed. Please see Bolt Torque Chart (page 13) for proper torque information.

GB5 ADJUSTMENTS

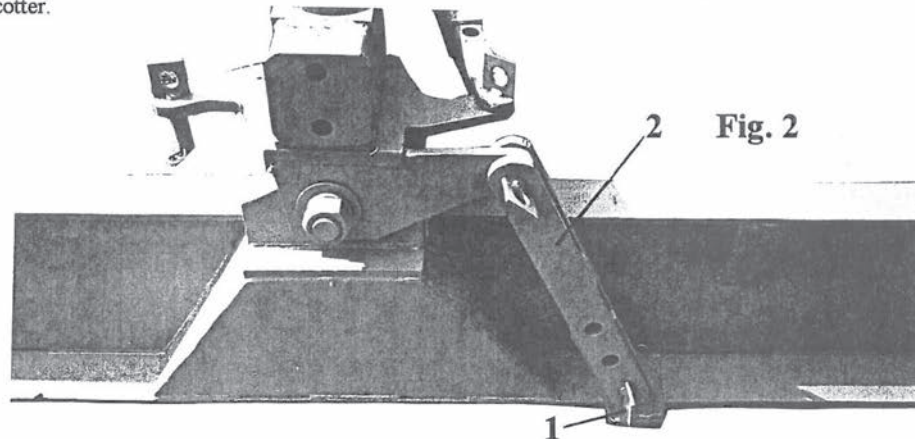
OFFSET

To manually offset the angle of the grader, remove the adjusting tube pin, Ref. 1, Fig. 1, and either slide the manual adjusting tube, Ref. 2, in or out of the adjusting tube receiver, Ref. 3, until the desired angle is reached. Replace the adjusting pin to lock the angle setting and secure the pin with the hair pin cotter, Ref. 4.



TILT

There are two manual tilt positions of approximately 15° and 30° to both the left and right. Remove the adjusting pin, Ref. 1, Fig. 2, that attaches the adjusting bar, Ref. 2, to the moldboard and tilt the moldboard to the position you need. The bar can be reversed to reach tilt in the opposite direction. Replace the pin when holes have been aligned and secure the pin with the hair pin cotter.



OWNER SERVICE

WARNING

- NEVER GO UNDERNEATH EQUIPMENT. Never place any part of the body underneath equipment or between moveable parts even when the engine has been turned off. Hydraulic system leak down, hydraulic system failures, mechanical failures, or movement of control levers can cause equipment to drop or rotate unexpectedly and cause severe injury or death.
- Service work does not require going underneath.

WARNING

- Read Manual for service instructions or have service performed by a qualified dealer.

CAUTION

The information in this section is written for operators who possess basic mechanical skills. If you need help, your dealer has trained service technicians available. For your protection, read and follow the safety information in this manual.

Owner should check and tighten all hardware after the first hour of operation. The break in stage of your new grader blade can cause minimal loosening of hardware. Please see Bolt Torque Chart (page 13) for proper torque infor-

WARNING

mation.

- Keep all persons away from operator control area while performing adjustments, service, or maintenance.
- Before dismounting power unit or performing any service or maintenance, follow these steps: disengage power to equipment, lower the 3 point hitch and all raised components to the ground, operate valve levers to release any hydraulic pressure, set parking brake, stop engine, remove key, and unfasten seat belt.
- Always wear relatively tight and belted clothing to avoid entanglement in moving parts. Wear sturdy, rough-soled work shoes and protective equipment for eyes, hair, hands, hearing, and

CAUTION

head.

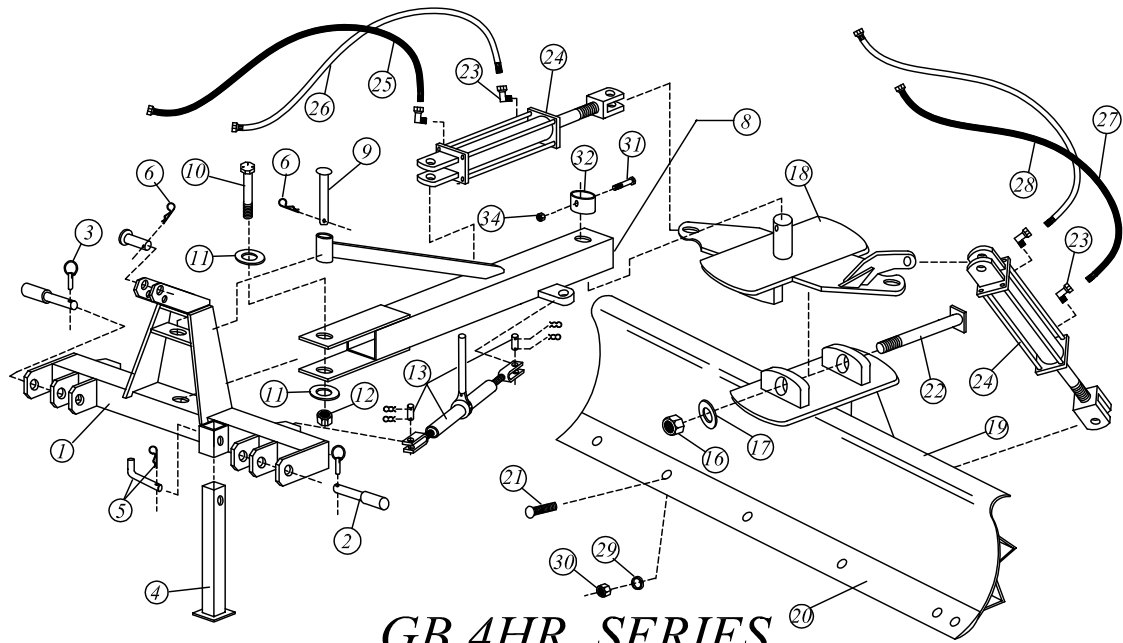
Storage

When storing your land plane make sure the unit is placed on level ground and clear of any obstructions. Use caution when disconnecting the unit from the tractor.

Troubleshooting

| PROBLEM | POSSIBLE CAUSE | POSSIBLE REMEDY |
|--|-----------------------------------|--|
| Grader is hard to control. Digs in and jump out. | Pitch or cutting angle too steep. | Flatten pitch by lengthening top link if going forward or shortening if going backwards. Also ground speed may be too great. |
| Grader doesn't cut satisfactorily. | Not enough pitched angle. | Increase pitch or angle slightly |
| Greater moldboard hits tractor arms when in reverse. | Lift to high or pitched to flat. | Lower unit nearly to the ground, and shorten the top link until reversed. |

GB4- HR SERIES



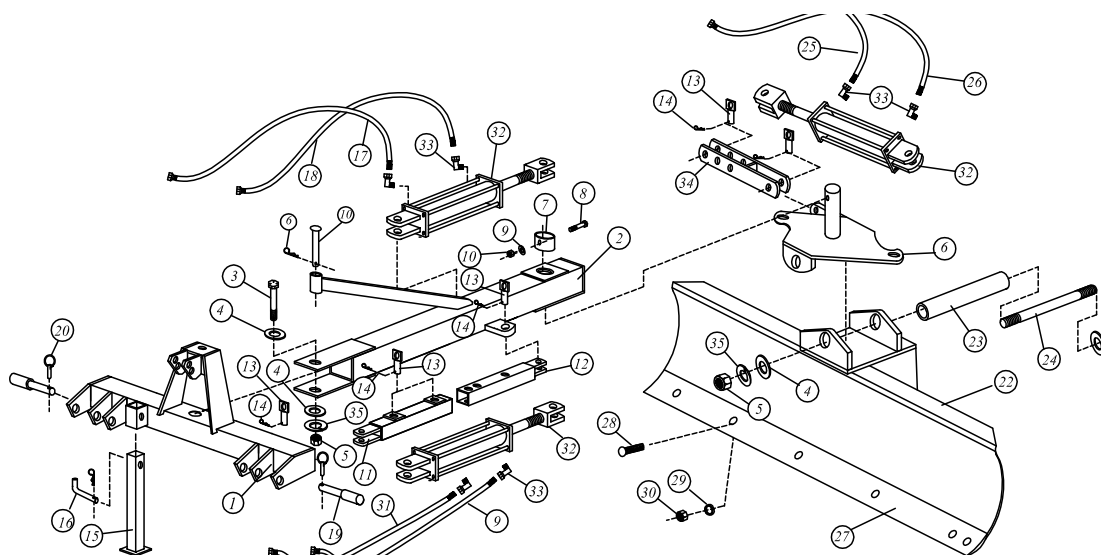
GB 4HR SERIES

GB4-72HR, GB4-84HR, GB4-96HR

| REF. # | PART # | DESCRIPTION |
|--------|--------|-------------------------------------|
| 1 | 13726 | HITCH WELDMENT |
| 2 | 13257 | HITCH PIN, CAT I,II |
| 3 | VP252 | LYNCH PIN |
| 4 | 12653 | PARKING STAND, 25 1/2" |
| 5 | 9690 | PARKING STAND PIN W/ CLIP PIN |
| 6 | 9979 | HAIR CLIP PIN |
| 7 | 13311 | TOP LINK PIN, 1" X 3 1/2" |
| 8 | 14943 | MAIN BAR WELD'T |
| 9 | 13310 | STRUT PIN, 1" X 5" |
| 10 | 13254 | HEX BOLT, 1" X 7" GR.8 |
| 11 | T-606 | FLAT WASHER, 1" |
| 12 | 10332 | HEX LOCK NUT, 1" |
| 13 | 15005 | TURNBUCKLE ASSEMBLY |
| 14 | 13258 | LATERAL ADJUSTING BAR |
| 15 | 13260 | ADJUSTING BAR PIN, 1" X 3" |
| 16 | T-727a | LOCK NUT, 1 1/2" |
| 17 | T-605 | FLAT WASHER, 1 1/2" |
| 18 | 14952 | TILT PLATE WELD'T |
| 19 | 13636 | MOLDBOARD, 72" |
| | 13637 | MOLDBOARD, 84" |
| | 13638 | MOLDBOARD, 96" |
| 20 | 10704 | CUTTING EDGE, 72" |
| | 10705 | CUTTING EDGE, 84" |
| | 10706 | CUTTING EDGE, 96" |
| 21 | 10699 | PLOW BOLT, 5/8" X 1 3/4" GR.5 |
| 22 | 13639 | REAR TILT BOLT |
| 23 | 9238 | HYDRAULIC ELL FOR 2500 PSI CYLINDER |
| 24 | 11743 | HYDRAULIC CYLINDER, 3 X 8 |
| 25 | 13054 | HYDRAULIC HOSE, 52" |
| 26 | 13640 | HYDRAULIC HOSE, 62" |
| 27 | 13641 | HYDRAULIC HOSE, 87" |
| 28 | 13058 | HYDRAULIC HOSE, 95" |
| 29 | T-24 | 5/8" LOCK WASHER |
| 30 | T-22 | 5/8" HEX NUT |
| 31 | 12179 | HEX BOLT, 1/2" X 5" GR. 2 |
| 32 | 13632 | TILT & PIVOT HOUSING COLLAR |
| 34 | 9226 | HEX NUT, 1/2" |

*MS = Model Specific

PAGE 3



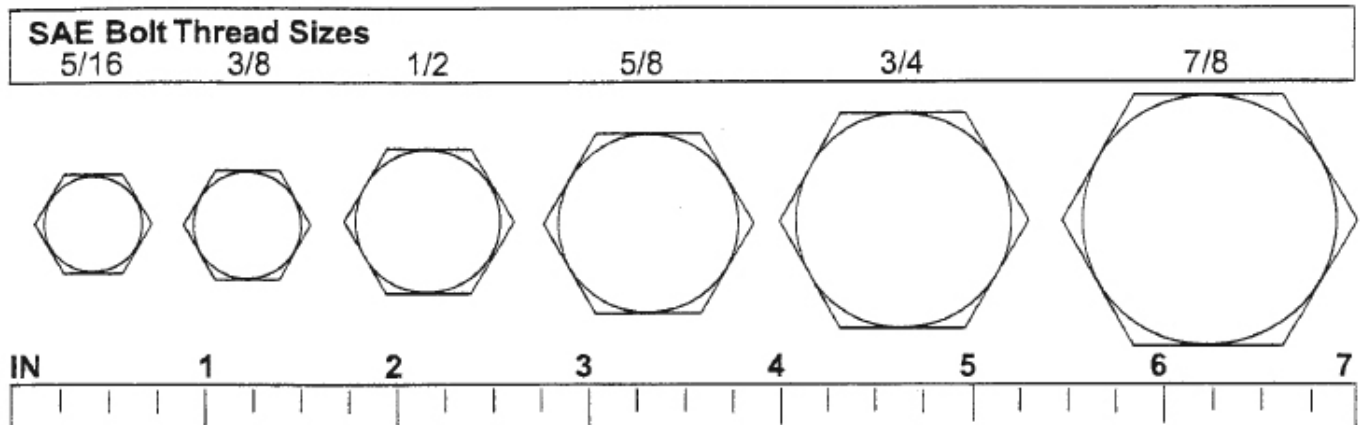
GB 5 SERIES

COVERS MODELS / GB5-84, GB5-96, GB5-108

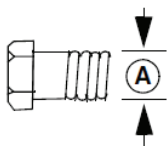
| REF. # | PART # | DESCRIPTION |
|--------|--------|--------------------------------------|
| 1 | 13539 | HITCH WELDMENT |
| 2 | 13540 | SWING BAR WELD'T |
| 3 | 13568 | FRONT SWING BAR PIN, 1 1/2" X 8 7/8" |
| 4 | T-605 | FLAT WASHER, 1 1/2" |
| 5 | T-727 | LOCK NUT, 1 1/2" |
| 6 | 13549 | TILT PIVOT HOUSING |
| 7 | 13632 | TILT PIVOT HOUSING COLLAR |
| 8 | T-745 | HEX BOLT, 5/8" X 5" GR.5 |
| 9 | 15606 | HYDRAULIC HOSE, 79" |
| 10 | 15132 | NYLON INSERT LOCK NUT, 5/8" |
| 11 | 13569 | ADJUSTING BAR RECEIVER |
| 12 | 13570 | MANUAL OFFSET ADJUSTING TUBE |
| 13 | 13260 | ADJUSTING BAR PIN, 1" X 3" |
| 14 | 9979 | HAIR PIN COTTER |
| 15 | 11037 | PARKING STAND, 32" |
| 16 | 9690 | PARKING STAND PIN W/ CLIP |
| 17 | 15605 | HYDRAULIC HOSE, 75" |
| 18 | 12350 | HYDRAULIC HOSE, 90" |
| 19 | 13528 | HITCH PIN, CAT II & III |
| 20 | VP252 | LYNCH PIN |
| 21 | 13310 | STRUT PIN, 1" X 5" |
| 22 | 13571 | MOLDBOARD WELD'T, 84" |
| | 13572 | MOLDBOARD WELD'T, 96" |
| | 13573 | MOLDBOARD WELD'T, 120" |
| 23 | 13566 | PIVOT HOUSING BUSHING, 9 7/16" |
| 24 | 13510 | REAR TILT BOLT, 13 3/4" |
| 25 | 15607 | HYDRAULIC HOSE, 110" |
| 26 | 13226 | HYDRAULIC HOSE, 125" |
| 27 | 10705 | CUTTING EDGE, 84" |
| | 10706 | CUTTING EDGE, 96" |
| | 13455 | CUTTING EDGE, 108" |
| 28 | 10699 | PLOW BOLT, 5/8" X 1 3/4" |
| 29 | T-24 | 5/8" LOCK WASHER |
| 30 | T-22 | 5/8" HEX NUT |
| 31 | 12842 | HYDRAULIC HOSE, 72" |
| 32 | 11743 | HYDRAULIC CYLINDER, 3 X 8 |
| 33 | 15540 | HYDRAULIC ELL, 3000PSI. CYLINDER |
| 34 | 13563 | REAR MANUAL TILT BAR |
| 35 | T-728 | LOCK WASHER, 1 1/2" |
| | | |
| | | |

Bolt Size Chart

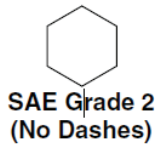
NOTE: Chart shows bolt thread sizes and corresponding head (wrench) sizes for standard SAE and metric bolts.



SAE Torque Chart



SAE SERIES TORQUE CHART



SAE Bolt Head
Identification



| A Diameter (Inches) | Wrench Size | MARKING ON HEAD | | | | | |
|---------------------------|----------------|-----------------|-----|--------|-----|--------|------|
| | | SAE 2 | | SAE 5 | | SAE 8 | |
| | | lbs-ft | N-m | lbs-ft | N-m | lbs-ft | N-m |
| 1/4" | 7/16" | 6 | 8 | 10 | 13 | 14 | 18 |
| 5/16" | 1/2" | 12 | 17 | 19 | 26 | 27 | 37 |
| 3/8" | 9/16" | 23 | 31 | 35 | 47 | 49 | 67 |
| 7/16" | 5/8" | 36 | 48 | 55 | 75 | 78 | 106 |
| 1/2" | 3/4" | 55 | 75 | 85 | 115 | 120 | 163 |
| 9/16" | 13/16" | 78 | 106 | 121 | 164 | 171 | 232 |
| 5/8" | 15/16" | 110 | 149 | 170 | 230 | 240 | 325 |
| 3/4" | 1-1/8" | 192 | 261 | 297 | 403 | 420 | 569 |
| 7/8" | 1-5/16" | 306 | 416 | 474 | 642 | 669 | 907 |
| 1" | 1-1/2" | 467 | 634 | 722 | 979 | 1020 | 1383 |

13 Bolt Size and Bolt Torque Chart

WARRANTY

Please enter information below and save for future reference:

Date Purchase: _____ From (Dealer): _____
Model Number: _____ Serial Number: _____

Monroe-Tufline Manufacturing Co., Inc. ("Monroe-Tufline") warrants this product to be free from defect in material and workmanship. Except as otherwise set forth below, the duration of this Warranty shall be for SIX (6) MONTHS COMMENCING ON THE DATE OF DELIVERY OF THE PRODUCT TO THE ORIGINAL PURCHASER.

Under no circumstances will this Warranty apply in the event that the product, in the good faith opinion of Monroe-Tufline, has been subjected to improper operation, improper maintenance, misuse, or an accident. This Warranty does not apply in the event that the product has been materially modified or repaired by someone other than Monroe-Tufline, a Monroe-Tufline authorized dealer or distributor, and/or a Monroe-Tufline authorized service center. This Warranty does not cover normal wear or tear, or normal maintenance items. This Warranty also does not cover repairs made with parts other than those obtainable through Monroe-Tufline.

This Warranty is extended solely to the original purchaser of the product. Should the original purchaser sell or otherwise transfer this product to a third party, this Warranty does not transfer to the third party purchaser in any way. There are no third party beneficiaries of this Warranty.

Monroe-Tufline makes no warranty, express or implied, with respect to cutting edges, shanks, tires or other parts or accessories not manufactured by Monroe-Tufline. Warranties for these items, if any, are provided separately by their respective manufacturers.

Monroe-Tufline's obligation under this Warranty is limited to, at Monroe-Tufline's option, the repair or replacement, free of charge, of the product if Monroe-Tufline, in its sole discretion, deems it to be defective or in noncompliance with this Warranty. Such parts shall be provided by the selling dealer to the user during regular working hours. If requested, the product must be returned to Monroe-Tufline with proof of purchase within thirty (30) days after such defect or noncompliance is discovered or should have been discovered, routed through the dealer and distributor from whom the purchase was made, transportation charges prepaid. Monroe-Tufline shall complete such repair or replacement within a reasonable time after Monroe-Tufline receives the product. THERE ARE NO OTHER REMEDIES UNDER THIS WARRANTY. THE REMEDY OF REPAIR OR REPLACEMENT IS THE SOLE AND EXCLUSIVE REMEDY UNDER THIS WARRANTY.

THERE ARE NO WARRANTIES WHICH EXTEND BEYOND THE DESCRIPTION ON THE FACE OF THIS WARRANTY. MONROE-TUFLINE MAKES NO OTHER WARRANTY, EXPRESS OR IMPLIED, AND MONROE-TUFLINE SPECIFICALLY DISCLAIMS ANY IMPLIED WARRANTY OF MERCHANTABILITY AND/OR ANY IMPLIED WARRANTY OF FITNESS FOR A PARTICULAR PURPOSE (EXCEPT WHERE PROHIBITED BY LAW).

Monroe-Tufline shall not be liable for any incident or consequential losses, damages or expenses, arising directly or indirectly from the product, whether such claim is based upon breach of contract, breach of warranty, negligence, strict liability in tort or any other legal theory. Monroe-Tufline's obligation under this warranty, to the extent allowed by law, is in lieu of all warranties, implied or expressed for a particular purpose and any liability for incidental and consequential damages with respect to the sale or use of the items warranted. Such incidental and consequential damages shall include but not be limited to: transportation charges other than normal freight charges; loss of crops or any other loss of income; rental of substitute equipment, expenses due to loss, damage, detention or delay in the delivery of equipment or parts resulting from acts beyond the control of Monroe-Tufline.

This Warranty is subject to any existing conditions of supply which may directly affect Monroe-Tufline's ability to obtain materials or manufacture replacement parts.

No agent, representative, dealer, distributor, serviceperson, salesperson, or employee of any company, including without limitation, Monroe-Tufline, its authorized dealers, distributors, and service centers, is authorized to alter, modify, or enlarge this Warranty.

This Warranty is subject to the warranty registration being submitted. For warranty services, contact your selling dealer.

WARRANTY FOR PARTS

Monroe-Tufline Manufacturing Co., Inc. ("Monroe-Tufline") warrants its parts to be free from defect in material and workmanship for a period of ninety (90) days from the date of delivery of the part(s) to the original purchaser.

Replacement or repair parts installed in the equipment covered by warranty are warranted for ninety (90) days from date of purchase of such part or to the expiration of the applicable new equipment warranty period, whichever occurs later.

Under no circumstances will this Warranty apply in the event that the product the parts are installed in, in the good faith opinion of Monroe-Tufline, has been subjected to improper operation, improper maintenance, misuse, or an accident. This Warranty does not cover normal wear or tear, or normal maintenance items.

This Warranty is extended solely to the original purchaser of the product. Should the original purchaser sell or otherwise transfer this product to a third party, this Warranty does not transfer to a third party purchaser in any way. There are no third party beneficiaries of this Warranty.

Monroe-Tufline's obligation under this Warranty is limited to, at Monroe-Tufline's option, the repair or replacement, free of charge, of the product if Monroe-Tufline, in its sole discretion, deems it to be defective or in noncompliance with this Warranty. The selling dealer shall provide such parts to the user during regular working hours. If requested, the product must be returned to Monroe-Tufline with proof of purchase within thirty (30) days after such defect or noncompliance is discovered or should have been discovered, routed through the dealer and distributor from whom the purchase was made, transportation charges prepaid. Monroe-Tufline shall complete such repair or replacement within a reasonable time after Monroe-Tufline receives the product. THERE ARE NO OTHER REMEDIES UNDER THIS WARRANTY. THE REMEDY OF REPAIR OR REPLACEMENT IS THE SOLE AND EXCLUSIVE REMEDY UNDER THIS WARRANTY.

THERE ARE NO WARRANTIES WHICH EXTEND BEYOND THE DESCRIPTION ON THE FACE OF THIS WARRANTY. MONROE-TUFLINE MAKES NO OTHER WARRANTY, EXPRESS OR IMPLIED, AND MONROE-TUFLINE SPECIFICALLY DISCLAIMS ANY IMPLIED WARRANTY OF MERCHANTABILITY AND/OR ANY IMPLIED WARRANTY OF FITNESS FOR A PARTICULAR PURPOSE (EXCEPT WHERE PROHIBITED BY LAW).

Monroe-Tufline shall not be liable for any incidental or consequential losses, damages or expenses, arising directly or indirectly from the product, whether such claim is based upon breach of contract, breach of warranty, negligence, strict liability in tort or any other legal theory. Without limiting the generality of the foregoing, Monroe-Tufline specifically disclaims any damages relating to (i) lost profits, business, revenues or goodwill; (ii) loss of crops; (iii) loss because of delay in harvesting; (iv) any expense or loss incurred for labor, supplies, substitute machinery or rental; or (v) any other type of damage to property or economic loss.

This Warranty is subject to any existing conditions of supply which may directly affect Monroe-Tufline's ability to obtain materials or manufacture replacement parts.

No agent, representative, dealer, distributor, service person, salesperson, or employee of any company, including without limitation, Monroe-Tufline, its authorized dealers, distributors, and service centers, is authorized to alter, modify, or enlarge this Warranty.

For warranty services, contact your selling dealer.

NOTES: _____

FILL OUT REGISTRATION CARD BELOW AND MAIL TO:

MONROE TUFLINE
Attn; Owner Registration
PO BOX 7755
Columbus, MS 39705

OWNER WARRANTY REGISTRATION

NAME _____ ADDRESS / CITY / STATE _____

DEALER NAME _____ CITY / STATE _____

DATE OF PURCHASE _____ MODEL # _____ SERIAL # _____

COMMENTS _____

PART NO.
14309

